



VRLA 12V125AH

SA12V125C

Specifications	
Nominal Voltage	12 V
Nominal Capacity 20HR/CCA	125AH/700CCA
Dimensions	Length 330±1mm (12.99 inches)
	Width 172±1mm (6.77 inches)
	Container Height 217±1mm (8.54 inches)
	Total Height (with terminal) 220±1mm (8.66 inches)
Approx Weight	Approx 30.0 kg
Terminal	M6
Container Material	ABS Plastic
Lead Material	Purity Lead 99.995%
Sulfuric Acid	Distilled Sulfuric Acid (Zero metal content)
Separator	AGM
Rated Capacity	125.0 AH/6.25A (20hr, 1.80V/cell, 25°C/77°F)
	115.0 AH/11.5A (10hr, 1.80V/cell, 25°C/77°F)
	101.0 AH/20.2A (5hr, 1.75V/cell, 25°C/77°F)
	85.7 AH/28.5A (3hr, 1.75V/cell, 25°C/77°F)
	68.4 AH/68.4A (1hr, 1.60V/cell, 25°C/77°F)
Max. Discharge Current	1200A (5s)
Internal Resistance	Approx 4.9mΩ
Operating Temp.Range	Discharge : -15 - 50°C (5 - 122°F)
	Charge : 0 - 40°C (32 - 104°F)
	Storage : -15 - 40°C (5 - 104°F)
Nominal Operating Temp.Range	25±3°C (77±5°F)
Cycle Use	Initial Charging Current less than 36.0A. Voltage 14.4V - 14.7V at 25°C (77°F) Temp.Coefficient -30mV/°C
Standby Use	No limit on Initial Charging Current Voltage 13.5V - 13.8V at 25°C (77°F) Temp.Coefficient -20 mV/°C
Capacity affected by Temperature	40°C (104°F) 103%
	25°C (77°F) 100%
	0°C (32°F) 86%
Self Discharge	Zeal AGM series batteries may be stored for up to 6 months at 25°C (77°F) and then a freshening charge is required. For higher temperatures the time interval will be shorter.



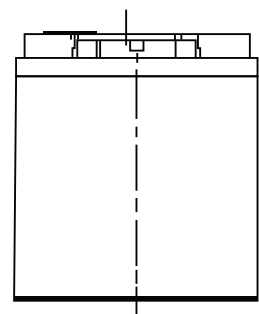
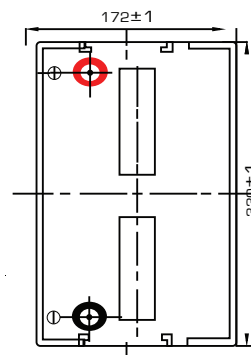
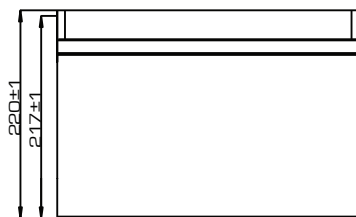
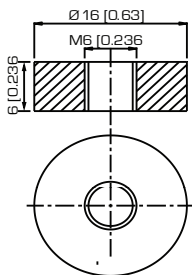
Applications

- All purpose
- Standby Applications
- Recreation Vehicles
- Uninterruptible Power Supply (UPS)
- Electric Power System (EPS)
- Fire & Security
- Generators
- Medical Equipment

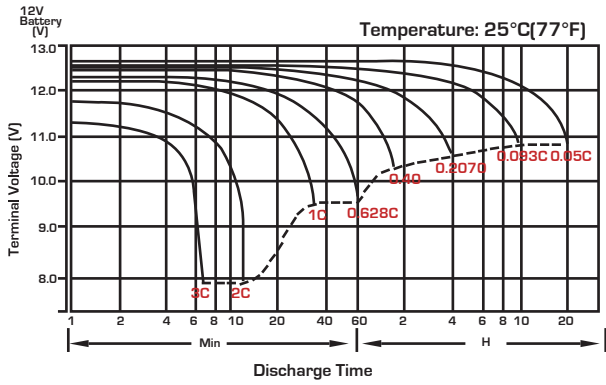
Dimensions

▲ M6 Terminal

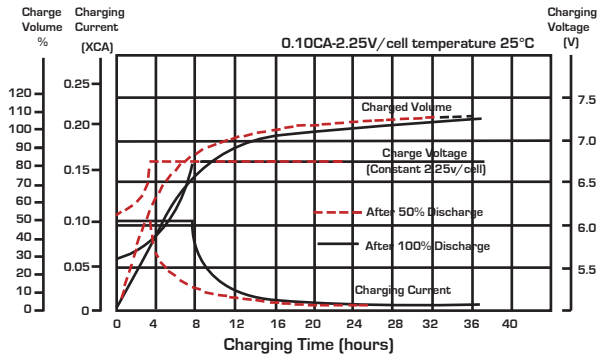
Unit: mm (inches)



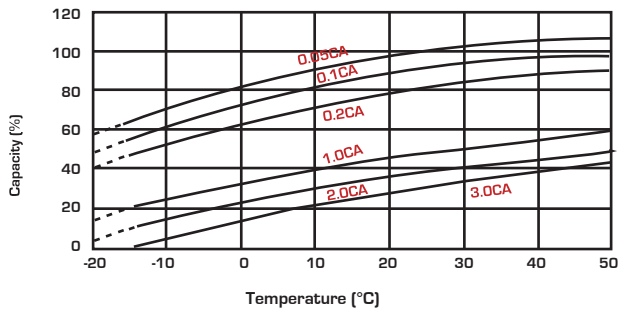
Discharge Characteristics



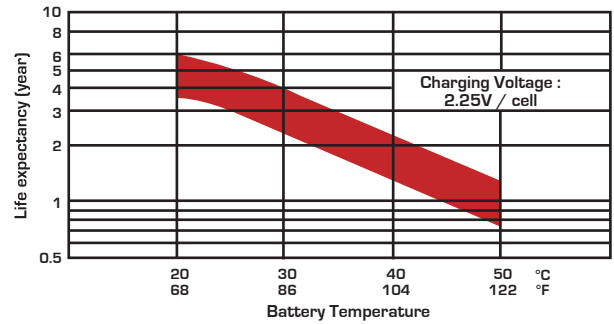
Float Charging Characteristics



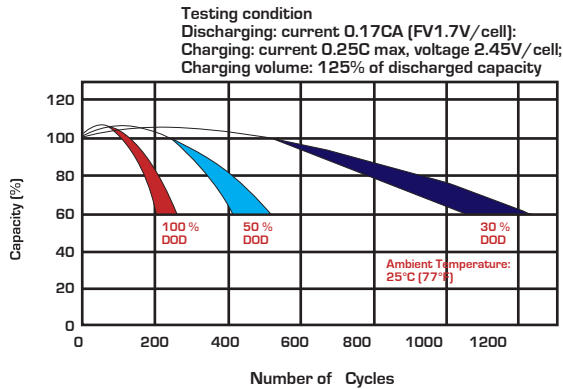
Temperature Effects in Relation to Battery Capacity



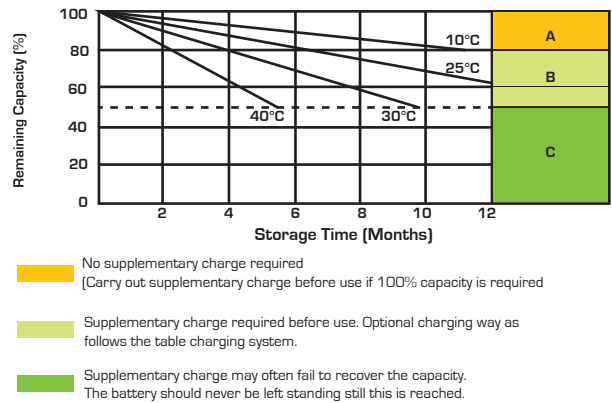
Effect of Temperature on Long Term Float Life



Cycle Life in Relation to Depth of Discharge



Self Discharge Characteristics



Charging System

DOD	Current Limit (A)	Constant Voltage (V)	Fully Charged Time (h)
20	0.15C ₁₀	13.5-13.8 vpc (12V)	10
	0.20C ₁₀	6.75-6.9 vpc (6V)	8
50	0.15C ₁₀	13.5-13.8 vpc (12V)	15
	0.20C ₁₀	6.75-6.9 vpc (6V)	12
80	0.15C ₁₀	13.5-13.8 vpc (12V)	16
	0.20C ₁₀	6.75-6.9 vpc (6V)	14
100	0.15C ₁₀	13.5-13.8 vpc (12V)	20
	0.20C ₁₀	6.75-6.9 vpc (6V)	18

State of Charge (SOC)

Open Circuit Voltage (V/cell)	Open Circuit Voltage (12V/cell)	Open Circuit Voltage (6V/cell)	State of Charge (% of full charge capacity)
2.14-2.15	12.84-12.90	6.42-6.46	100
2.12-2.13	12.72-12.78	6.36-6.39	90
2.11	12.66	6.33	80
2.09	12.54	6.27	70
2.07	12.42	6.21	60
2.05	12.30	6.15	50



Sealed Performance Batteries

Domestic Sales | Ph: +61 (0)7 3386 1102 | Fax: +61 (0)7 3102 9913

sales@spb.net.au | www.sealedperformance.com.au

National Warehouse | 1 Ant Road | Yatala, Brisbane QLD 4207

Melbourne Office | 2/9 Compark Circuit | Mulgrave, Melbourne VIC 3170